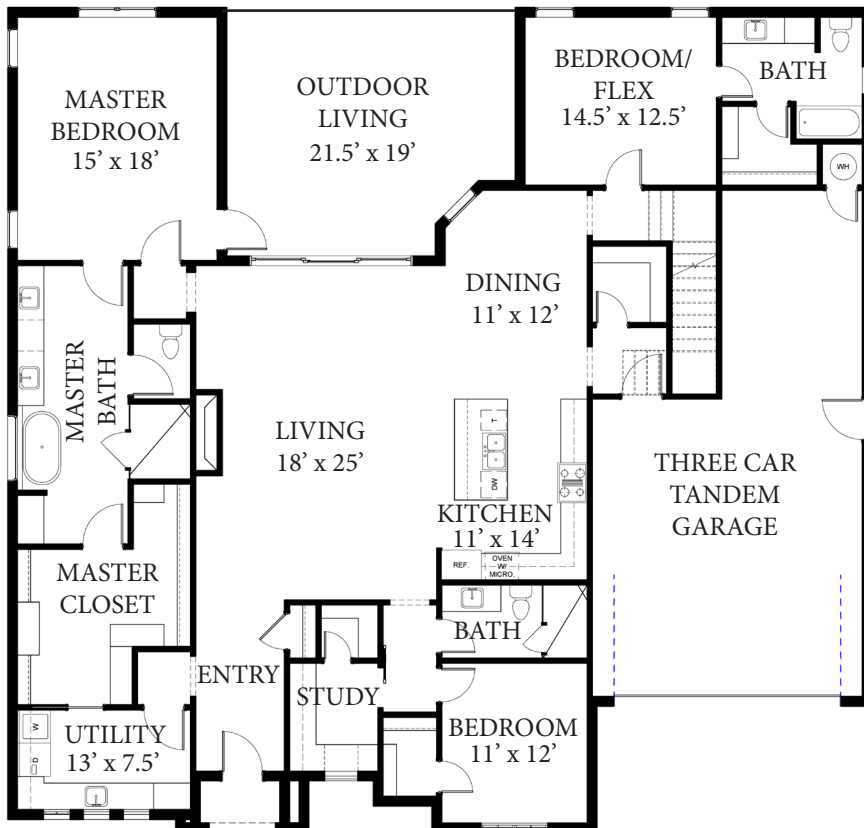




COPYRIGHT© BILL ROBERTS CUSTOM HOMES LLC.

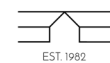
The Lakes at Cross Timbers

Bradford



FLOOR PLAN

- 2,710 SQ. FT. TOTAL
- 3 BED, 3 BATH
- OPEN LIVING AREA
- UTILITY ATTACHED TO CLOSET
- 2 FLEX ROOMS
- BUILT IN STUDY
- FUTURE SPACE UPSTAIRS



BILL ROBERTS
CUSTOM HOMES

16358 Muirfield Pl. Edmond OK, 73013
(405)359-0275

www.billrobertscustomhomes.com

Copyright Bill Roberts Custom Homes LLC. This plan is not to be copied or reproduced. The rendering is a proposed rendering. Builder does not guarantee that everything depicted in the rendering will be completed as shown. Builder reserves the right to make changes at any time without notice.