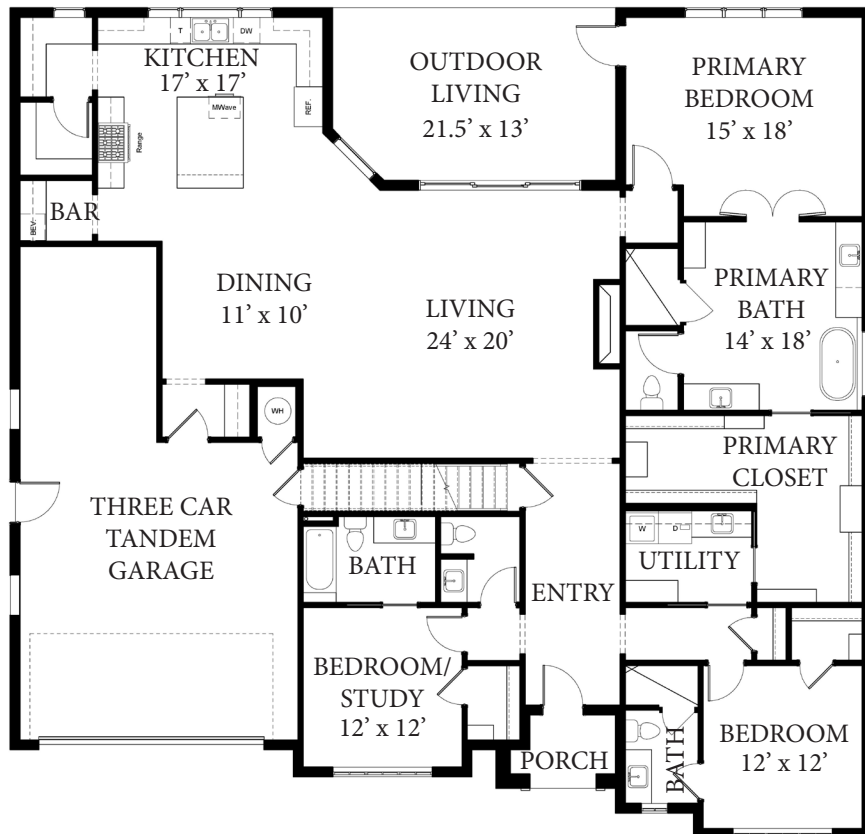




COPYRIGHT© BILL ROBERTS CUSTOM HOMES LLC.

The Lakes at Cross Timbers

The Whitney



FLOOR PLAN

2,747 SQ. FT.

3 BED, 3.5 BATH

OPEN LIVING AREA

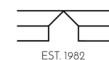
UTILITY ATTACHED TO CLOSET

VIEWS FROM KITCHEN

BUTLER'S PANTRY & BAR

EXPANSIVE OUTDOOR LIVING

FUTURE SPACE UPSTAIRS



BILL ROBERTS
CUSTOM HOMES

16358 Muirfield Pl. Edmond OK, 73013
(405)359-0275

www.billrobertscustomhomes.com

Copyright Bill Roberts Custom Homes LLC. This plan is not to be copied or reproduced. The rendering is a proposed rendering. Builder does not guarantee that everything depicted in the rendering will be completed as shown. Builder reserves the right to make changes at any time without notice.