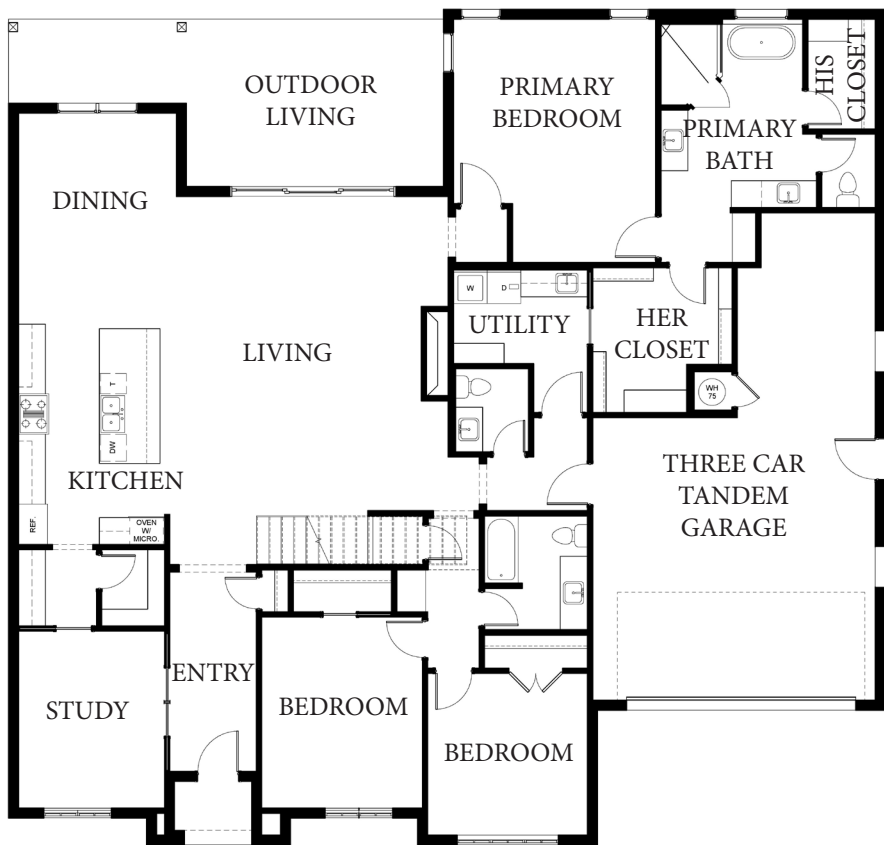




COPYRIGHT© BILL ROBERTS CUSTOM HOMES LLC.

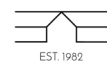
# *The Lakes at Cross Timbers*

## *Dawson II*



### FLOOR PLAN

- 2,753 SQ. FT. TOTAL
- 3 BED, 2 1/2 BATH
- OPEN LIVING AREA
- FULL STUDY
- BUTLER'S PANTRY
- TWO PRIMARY CLOSETS
- UTILITY ATTACHED TO CLOSET
- 3 CAR GARAGE
- FUTURE SPACE UPSTAIRS



**BILL ROBERTS**  
CUSTOM HOMES

16358 Muirfield Pl. Edmond OK, 73013  
(405)359-0275

[www.billrobertscustomhomes.com](http://www.billrobertscustomhomes.com)

Copyright Bill Roberts Custom Homes LLC. This plan is not to be copied or reproduced. The rendering is a proposed rendering. Builder does not guarantee that everything depicted in the rendering will be completed as shown. Builder reserves the right to make changes at any time without notice.