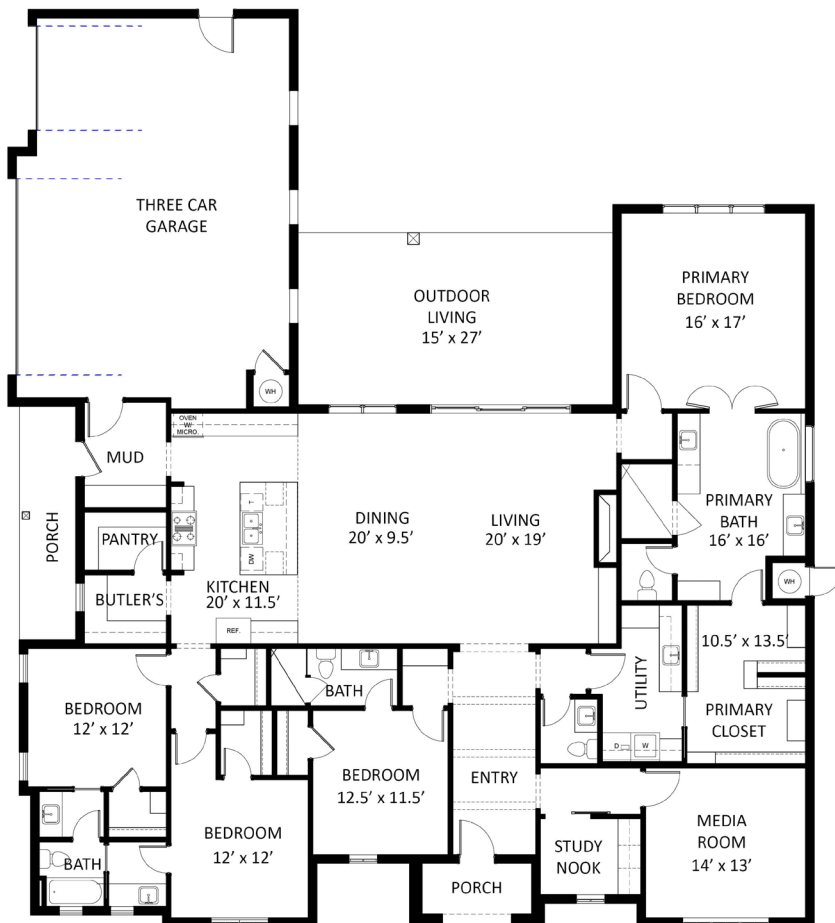




COPYRIGHT© BILL ROBERTS CUSTOM HOMES LLC.

# *Fallbrook*

## *2901 Wood Thrush - The June*



### FLOOR PLAN

3,167 SQ. FT.

SINGLE STORY

MODERN FARMHOUSE DESIGN

4 BED, 3.5 BATH

OPEN LIVING AREA

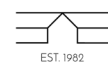
MEDIA ROOM

STUDY NOOK

UTILITY ATTACHED TO CLOSET

LARGE PANTRY & BUTLER'S

THREE CAR GARAGE



**BILL ROBERTS**

CUSTOM HOMES

16358 Muirfield Pl. Edmond OK, 73013

(405)359-0275

[www.billrobertscustomhomes.com](http://www.billrobertscustomhomes.com)

Copyright Bill Roberts Custom Homes LLC. This plan is not to be copied or reproduced. The rendering is a proposed rendering. Builder does not guarantee that everything depicted in the rendering will be completed as shown. Builder reserves the right to make changes at any time without notice.