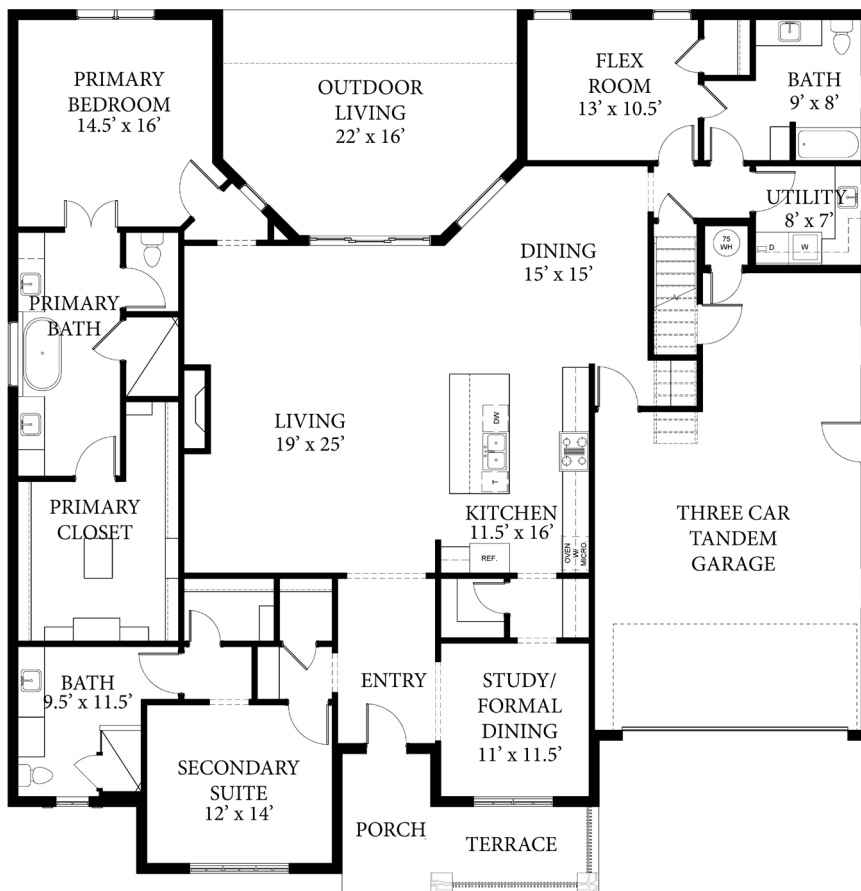




COPYRIGHT © BILL ROBERTS CUSTOM HOMES LLC.

# *The Lakes at Cross Timbers*

## *2316 Lazio Way - The Hudson*



### FLOOR PLAN

2,802 SQ. FT. TOTAL

3 BED, 3 BATH

OPEN LIVING AREA

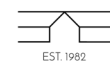
BUTLER'S PANTRY

EXPANSIVE PRIMARY SUITE

STUDY/FORMAL DINING

FLEX ROOM

FUTURE SPACE UPSTAIRS



**BILL ROBERTS**  
CUSTOM HOMES

16358 Muirfield Pl. Edmond OK, 73013  
(405)359-0275

[www.billrobertscustomhomes.com](http://www.billrobertscustomhomes.com)

Copyright Bill Roberts Custom Homes LLC. This plan is not to be copied or reproduced. The rendering is a proposed rendering. Builder does not guarantee that everything depicted in the rendering will be completed as shown. Builder reserves the right to make changes at any time without notice.